

The background of the slide features a low-angle, silhouette photograph of a group of graduates. They are captured in the middle of a celebratory act, with several black mortarboard caps being tossed into the air. Their arms are raised high, and some are holding rolled-up diplomas. The scene is set against a bright, clear sky, creating a high-contrast silhouette effect.

A Presentation for Parents and Juniors March 6 , 2024

College Search & Application Overview

Introductions

Shari Pimental

Guidance Counselor (A-L)

Jake Copley

Guidance Counselor (M-Z)

Fatima Mora-Flores

Spanish Liaison

Tonight's Agenda

Course Selection,
Healthy & Balanced

College options, Other
considerations, Area events,
Naviance, and College Fit Game

Healthy & Balanced

Sustainability Scale
Appropriate Rigor

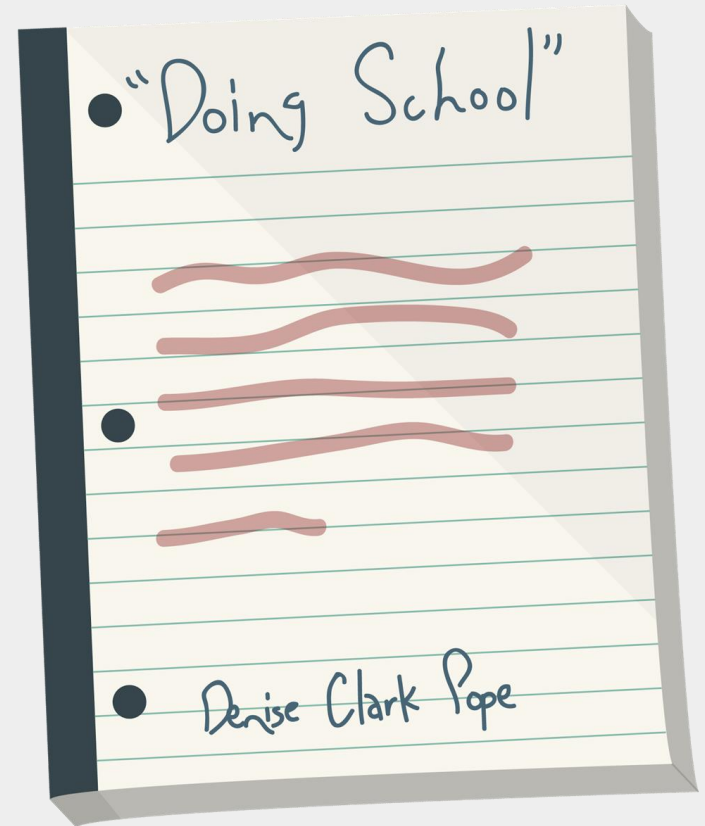
How do we support our
students in finding a
sustainable and appropriate
balance of academic rigor,
extracurriculars, and other
responsibilities they have?

CHALLENGE SUCCESS

DOING SCHOOL

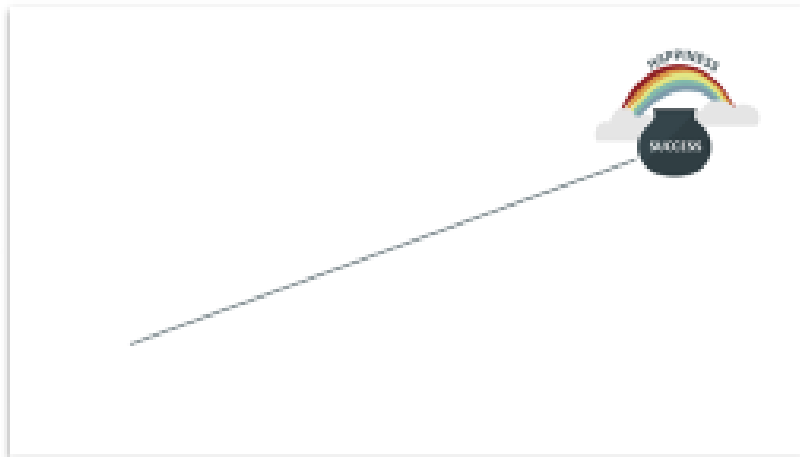
People don't go to school to learn. They go to get good grades, which brings them to college, which brings them the high paying job, which brings them to happiness, or so they think."

~ Kevin Romoni, Grade 10, Doing School

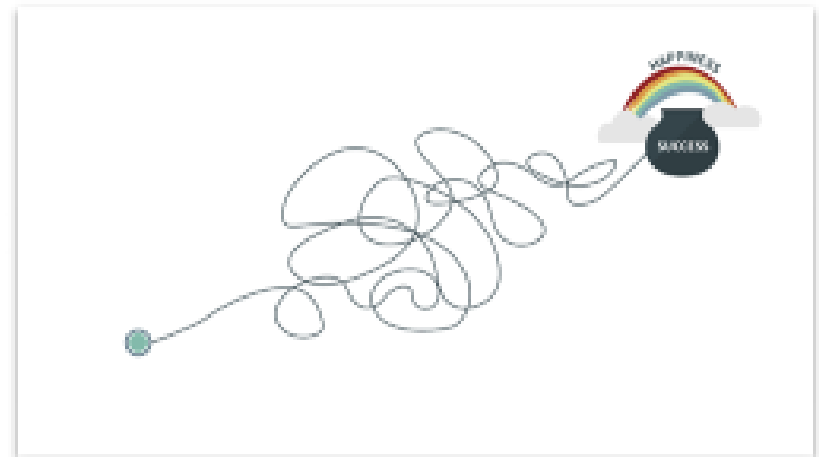


PATH TO SUCCESS

A



B



ELEPHANT IN THE ROOM

Much of high school stress is driven by the belief that:

1. There are a **few highly selective colleges**, and they are **impossibly hard** to get into.
2. Success and happiness **depend on** getting into one of them.



A “FIT” OVER RANKINGS

White paper available at:
challengesuccess.org

Main takeaway:

It's not the college, it's the kid!

HOW they go, not *WHERE* they go.

Research shows that **a student's engagement in their college program** matters more in the long run than college ranking or name.

Remember: college is the **gateway, not the goal.**



What does “Fit” mean?

1

Focus on finding the right “fit” rather than fixating on a particular school or set of schools

A good fit is a college where your student will be engaged in class. Academically, Socially, Financially, Other

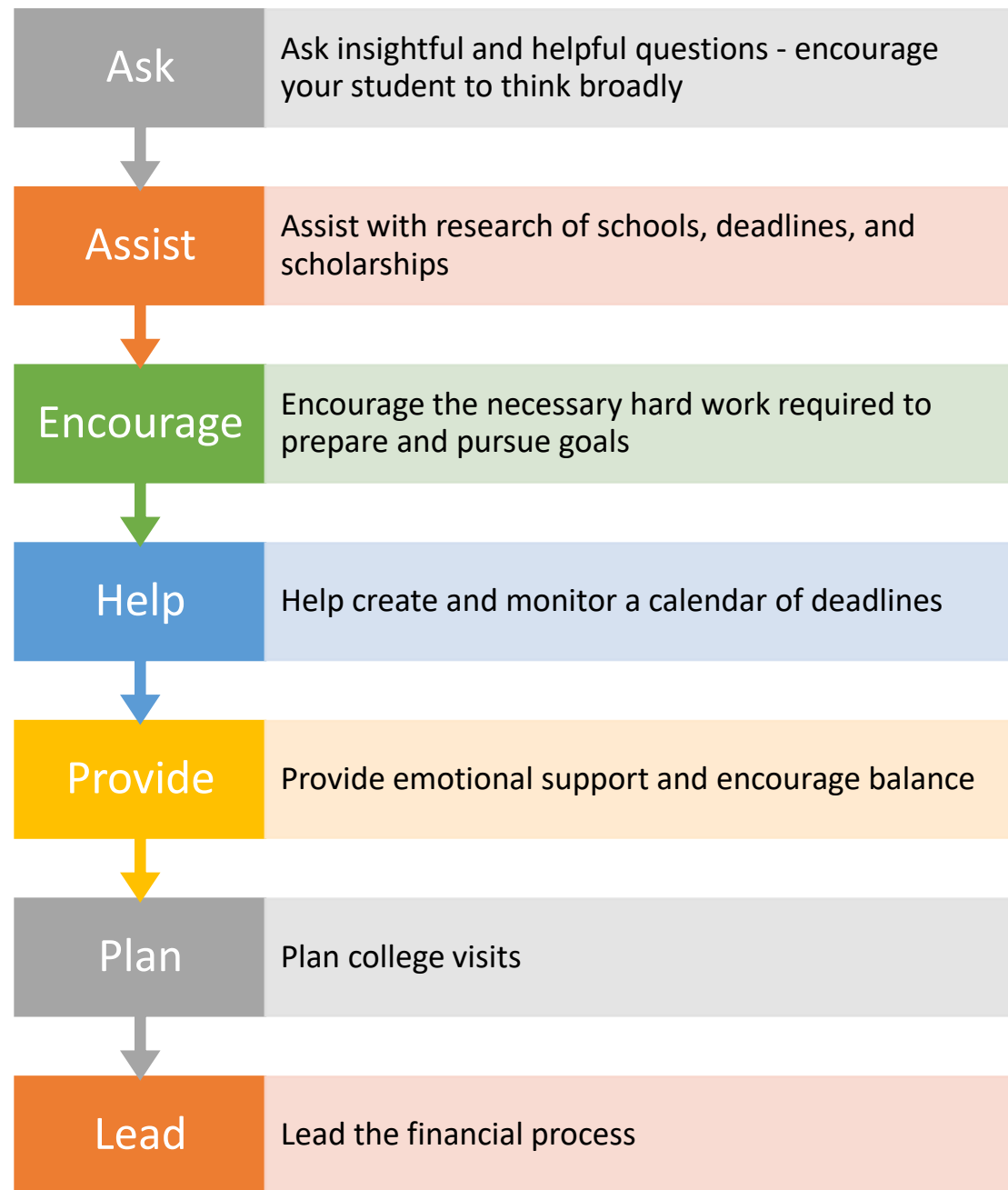
A student can participate fully in academic, civic, and social life in order to thrive

The College Admissions Process & Overview

How to approach and manage the college admission process as a family - including parental role

The basics: moving through the admission process from “prospect” to “admit”

Parent/Coach



Important Components of an Application

Any student can be a “prospect” or inquiry by requesting information

An application contains:

- Transcripts
 - Self Reporting Academic Record – SRAR
 - Official Transcript sent to the college if required
- List of activities
- Test Score if required (test optional schools)
 - Sent from the testing agency – SAT/ACT
- Letters of recommendations
 - Teacher and possibly counselor
- Essays – personal statements and supplemental
- School Report – Counselors fill out

Apply directly to the institution, Common App, Coalition

Check your email regularly to check your status or for missing components of the application.

Set up a separate email for all your college search process

Application Review

Holistic admission -vs- index guarantees

Rolling admissions -vs- pooling admissions

Early Decision, Early Action, Regular Decision

Remember: Colleges want to *admit* students!

College Selection Tips

Start Now

Understand the academic requirements

Understand the Cost of Attendance

College Fairs

Visit Campuses

- Formal and informal
- Make notes after each visit pro/cons

Utilize technology

- Search engines

**Naviance

- College Board – Big Future

College Selection Tips

Apply early

Senior year is busy and stressful
take care of applications early



When the decision is
right make it, not just
one right fit

Paying for College

Have open discussions about finances.

Talk to your son/daughter about what THEIR financial responsibilities will be.

Be straightforward about what your expectations are regarding applying for scholarships.

When researching a college, be mindful of the cost of attendance, but also aid available and net cost.

Use the Net Price Calculator

Scholarships, local, state, national websites. Naviance has a scholarship list, we post in schoology groups

Applying for scholarships takes time – KNOW YOUR DEADLINES

College Athletics

Students who hope to play a sport collegiately at NCAA (D1 or D II) schools MUST complete the online application thru the Eligibility Center before a letter of intent can be signed.

NAIA has its own registration process

If student is considering playing collegiately, they should notify their counselor and have a conversation with their coaches to help guide level.

What about community colleges?



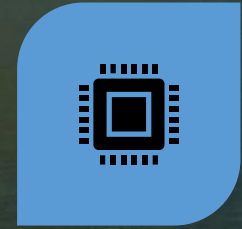
GUARANTEED ADMITTANCE
FOR HIGH SCHOOL
GRADUATES



TRANSFER TO A 4-YEAR
COLLEGE AFTER 1 OR 2 YEARS,
AND EARN A BACHELOR
DEGREE.



CERTIFICATE AND ASSOCIATE
DEGREE OPTIONS



DUAL-ENROLLMENT
PROGRAMS (LINN-BENTON
AND OSU, FOR INSTANCE) ARE
AVAILABLE



DEADLINES ARE FAR LATER IN
THE COLLEGE TIMELINE



OREGON PROMISE- NEED-
BASED STATE GRANT THAT
CAN COVER SOME OR ALL OF
TUITION FOR FIRST TWO
YEARS OF COMMUNITY
COLLEGE FOR OREGON GRADS
WITH A 2.0 GPA



FINANCIAL AID PROCESS IS
THE SAME

Marist events to help throughout the process

Common Application tutorials, essay workshops, Q & A's, and more August

College Planning Night for Parents - September

College FAQ's for students - September

Financial Aid Night Parents – October

College visits at Marist (throughout the fall)

Marist Newsline – Counselor's Corner

College Planning site on Marist website

Schoology Group Class of 2025

A large yellow triangle is positioned in the bottom right corner of the slide, pointing towards the top right.

A Note About Naviance

Naviance is essential throughout the application process.

Students need to keep their application plans up-to-date

Students request transcripts, letters of recommendation, for the colleges they apply to

Complete the Teacher/Counselor letter of recommendations survey in May

Parents have their own log-in info- (if you need yours, please contact your student's counselor)

Naviance is the delivery system through which we will send many important documents to your prospective colleges and universities. PLEASE KEEP



Naviance Tasks by Grade Level

Strengths Explorer - Freshman

Career Interest Profiler Sophomore

College Super Match – Junior December

Resume - Optional

Teacher/Counselor Letter of Recommendation survey – Must complete early Senior year

Add colleges to “Colleges I’m applying to if not using common app

Juniors should have completed the following tasks

Complete the Super Match – We did in December

**Complete the Post- High School Planning Survey -
December**

**Start researching school and add 5 schools to College's
I'm Thinking About to create your college list.**

**Complete the Teacher/Counselor Recommendation
Survey in June or over the summer**

What's in your packet?

- Profiles of the College Fit game
- College Timeline
- Students guide to college tours
- An unofficial copy of a student's transcripts
- Events to help with the process

College Fit Game

- Four Rounds
 - Academic
 - Social
 - Financial
 - Other

Reflect and Discuss